



### MAIN PARAMETERS

Dimensions	435 x 310 x 201 cm
Safety area	803 x 635 cm
Safety area (m <sup>2</sup> )	37,2 m <sup>2</sup>
Free fall height (HIC)	200 cm
Recommended age group	3-14 years
Recommended number of users	15 person
Complies with Standards	EN 1176-1 EN 1176-3
Platform area	1 m <sup>2</sup>
Slide platform height	120 cm

### FUNCTIONS

Slide	1 pc
Climbing wall	1 pc
Climbing rope	1 pc
Game desk	1 pc
Interactive play panel	2 pcs
Climbing net	1 pc
Spherical window	1 pc
Bar slide	1 pc
Climbing rock wall	2 pcs



SLIDING



HIDING



INTERACTION



CLIMBING



HANGING



TACTILE PLAY



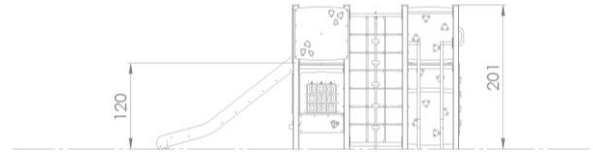
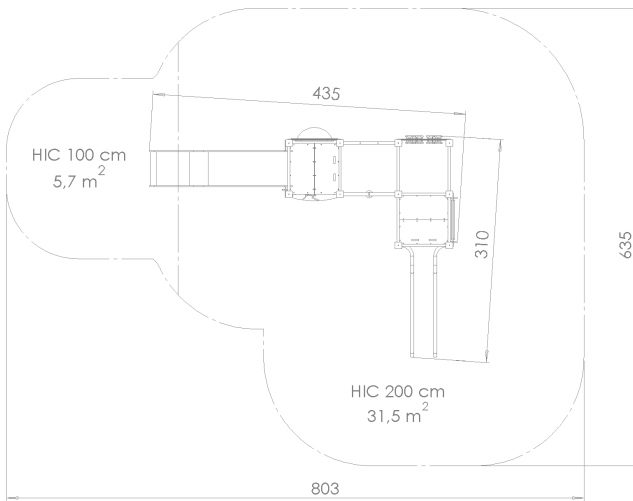
VISUAL  
STIMULATION



COOPERATION

TECHNICAL DATA SHEET  
**CLIMBING STRUCTURE - COMBO**  
 BLFJ609W

**broa.**



**SAFETY AREA**

HIC 100 cm	5,7 m <sup>2</sup>
HIC 200 cm	31,5 m <sup>2</sup>
<b>HIC in Total</b>	<b>37,2 m<sup>2</sup></b>

**MATERIAL USAGE**



**Construction:** surface-treated, laminated scots pine posts



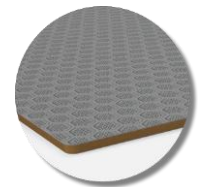
**Climbing frame:** D 42,4 mm, stainless pipe.



**Bars:** S235 carbon steel pipe. Surface treatment: hot dip galvanised, 2 layers of PE powder coating (60-70 µm per layer).



**Side panels, rooftops, decorative items:** 15 mm, contour milled, UV resistant HDPE plate.



**Platforms:** 16 mm, UV resistant, anti-slip HPL plate.



**Slide:** stainless steel gliding surface, 15 mm, UV resistant HDPE plate side panels.



**Fasteners, chains:** stainless steel.



**Ropes:** steel fibre reinforced, braided PP rope, threaded endings. Plastic, injection moulded PA knots.



**Window:** colourless PS, diameter 53 cm.