



### MAIN PARAMETERS

Dimensions	254 x 68 x 98 cm
Safety area	603 x 366 cm
Safety area (m <sup>2</sup> )	18 m <sup>2</sup>
Free fall height (HIC)	100 cm
Recommended age group	2-12 years
Recommended number of users	2 person
Complies with Standards	EN 1176-1 EN 1176-3
Platform area	0,44 m <sup>2</sup>

### FUNCTIONS

Slide	1 pc
-------	------



INTERACTION



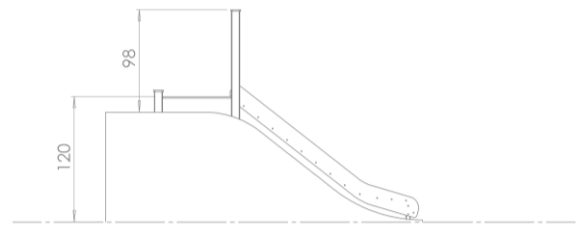
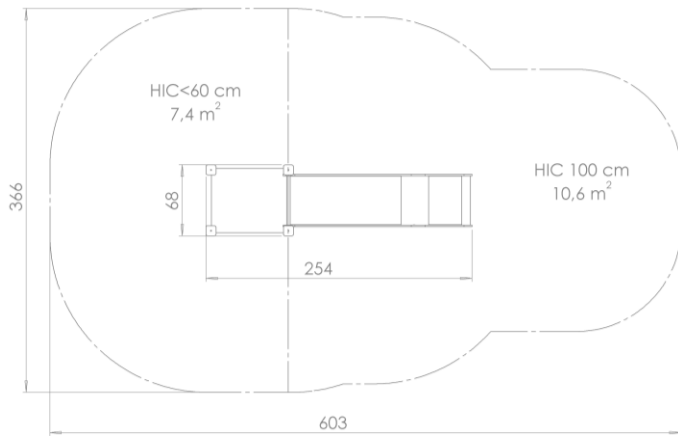
SLIDING



CLIMBING

TECHNICAL DATA SHEET  
**SLIDE - EMBANKMENT**  
 BLFJ044

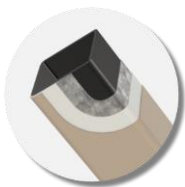
**broa.**



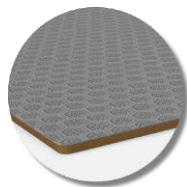
**SAFETY AREA**

HIC 100 cm	10,6 m <sup>2</sup>
HIC <60 cm	7,4 m <sup>2</sup>
<b>HIC in Total</b>	<b>18 m<sup>2</sup></b>

**MATERIAL USAGE**



**Construction:** 80 x 80 mm, S235 carbon steel hollow section, covered. Surface treatment: hot dip galvanised, 2 layers PE powder coating (60-70 µm per layer).



**Platform:** 16 mm, UV resistant, anti-slip HPL plate.



**Bar:** S235 carbon steel pipe. Surface treatment: hot dip galvanised, 2 layers PE powder coating (60-70 µm per layer).



**Fasteners:** stainless steel.



**Slide:** Stainless steel sliding surface with 15 mm UV-resistant HDPE sheet side panels.